

## GENERAL INFORMATION

TEAM SCOUTED: Spanish National Team  
THEIR OPPONENT: Serbia  
PLACE OF CONTEST: Ljubljana, Slovenia (Eurobasket 2013)  
DATE OF CONTEST: 9/18/13 Qtr Finals  
SCOUT: Knez

## OPPONENT'S OFFENSE

Do they play pattern, freelance, control or mixture? pattern (Gasol in low post / guard action = PnR, end around w/ Gasol at elbow)

Are they quick hitting or do they run continuity? continuity, though experienced guards can freelance well.

Which side of the floor do they prefer to attack? \_\_\_\_\_

Right \_\_\_\_\_ Left X Neither \_\_\_\_\_

Do they fast break? Yes When? offmisses / TOs (trap)

What type? standard 3 guards, 4-man trailer (Claver)

What are the strong points of this team on offense? center in low post, athletic + ~~aggressive~~ aggressive guards, all positions pass well.

What are the weak points of this team on offense? no true PF, frustration breeds selfishness/individuality at times.

What defense did their opponents use against them? man-to-man, light pressure

What defense do you think would be the most effective against them and why? ball pressure or even some traps. Also, single cover them in post (take away jumpers)

Additional Comments: \_\_\_\_\_

Efficient ~~aggressive~~ + experienced team, you can't fall behind early.

Must crash boards + pressure ball to level playing field.

They have a lot of egos, may splinter if they trail big  
increase time of possession

## OPPONENT'S DEFENSE

What defense or defenses did they use in this game? ↑ pressure man-to-man  
Some traps

What is their best defense? man-to-man (3/4 court)

Which defense did they use the most? man-to-man

Where is their point of pick upon the guard? 3/4 court

How do they defend the wings? deny w/ Gasol guarding backdoor  
(quarterbacking)

How do they defend the low post? single coverage w/ Marc Gasol (on  
Krstic), even Claver solo on block

How do they defend the high post? side-front

How do they defend the screens? help + recover (Some trap)  
~~rarely~~ → rarely go under / switch

Do they press? yes What kind? trap around midcourt

Are they slow getting back? not today (must-win game), but sometimes in earlier <sup>cont.</sup>

Is there a player (s) we might want to exploit? Victor Claver inside (SF playing PF)

What are their strong points on defense? pressure, funneling into help man  
C Gasol

What are their weak points on defense the baseline (due to pressure up high)  
can get lay-ups



DIAGRAM THE OPPONENT'S OFFENSE

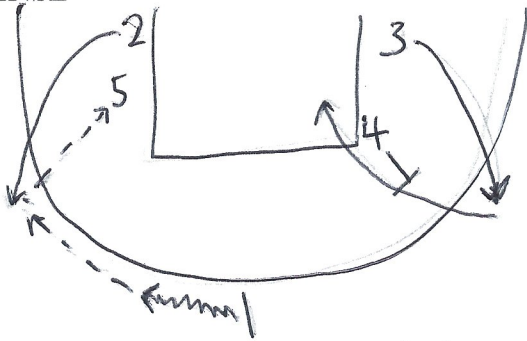
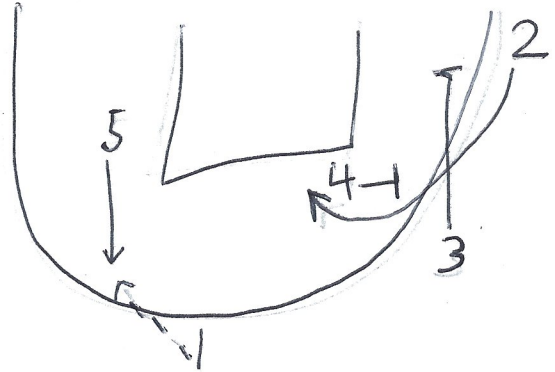


DIAGRAM THE OPPONENT'S SPECIAL SITUATIONS



What signal do they use to set up a play?

numbers (1-5) depending on who it's for. "Fist" is Gasol in post.

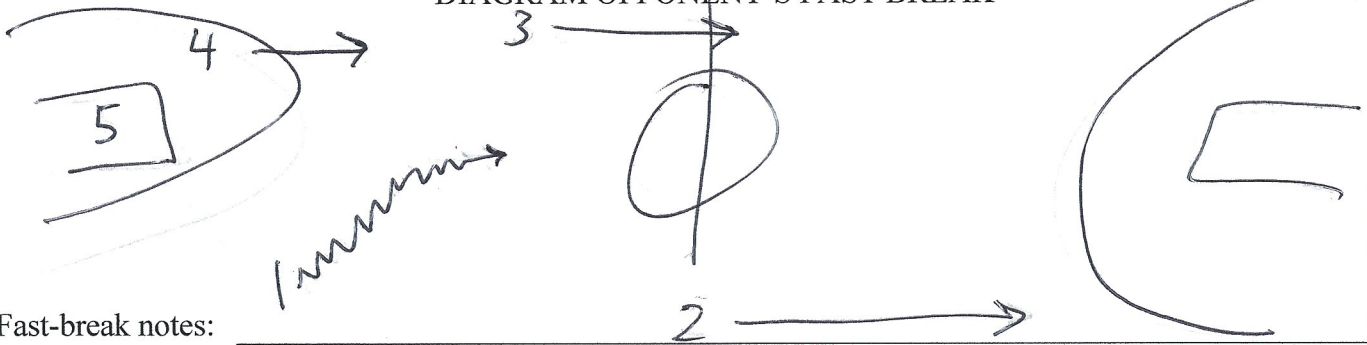
Does the same man handle the ball to set up the play? no, any guard can.

Do they favor a special man to pass? PG Ricky Rubio / PG Sergio Rodriguez (50-50)

If they worked for a last shot, whom did they try to get the basketball to?

(post) C Marc Gasol / SG Rudy Fernandez (curling off screen)

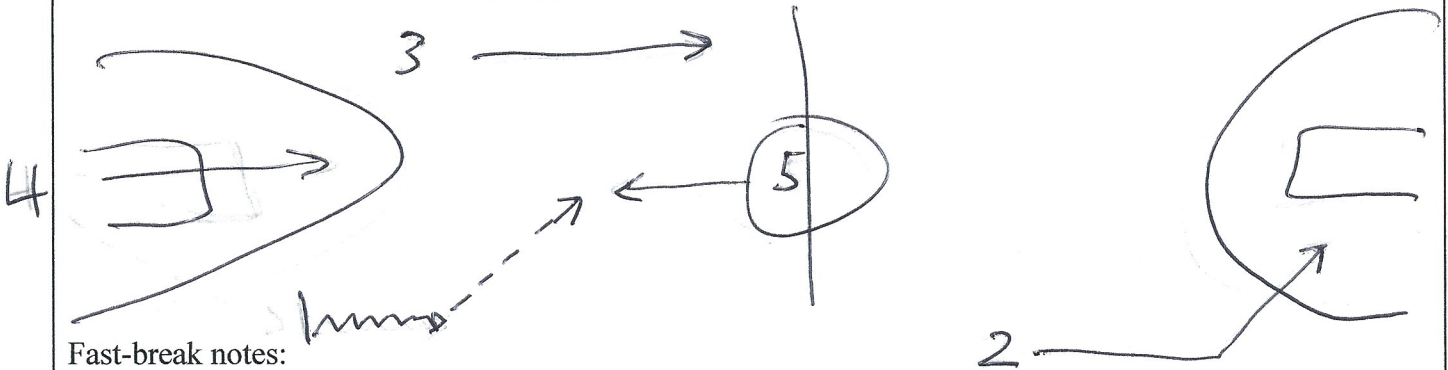
DIAGRAM OPPONENT'S FAST BREAK



Fast-break notes:

Watch PF leakout. They run for lay-ups / dunks (not 3's)

DIAGRAM OPPONENT'S PRESS OFFENSE



Fast-break notes:

Watch lob to Fernandez behind press. Also, Claver is ball-handler at PF. Rubio excellent

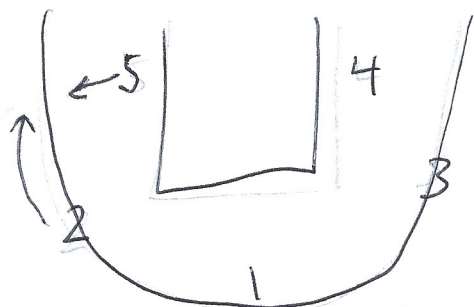
decision-maker & passer. Gasol is pressure-release at midcourt

What offensive set did their opponent use? a lot of P+R, also guard replace action

What are your offensive suggestions to attacking their defense? keep spacing bigs high to keep C Gasol away from basket. Drive to dish out, not score solo.

DIAGRAM THE OPPONENT'S DEFENSE

Man-to-man Defensive Diagrams



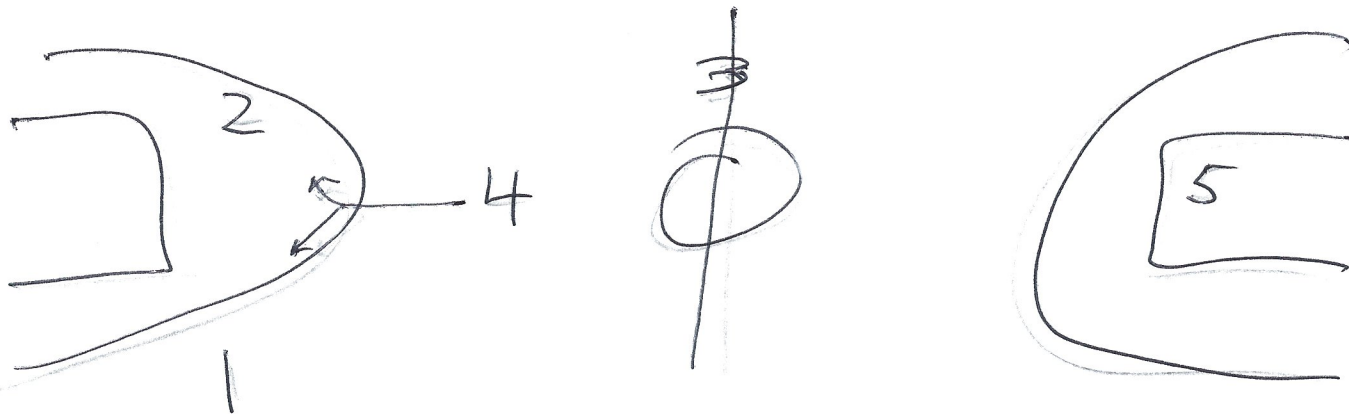
They like to push baseline w/ Gasol protecting rim

Zone Defensive Diagrams



C Gasol guards post player, other 4 matchup zone

DIAGRAM OPPONENT'S PRESS DEFENSE



Do they press the entire game or just in spots? in spots, after TOR or substitutions

Do they look to press after free-throw situations? yes

What kind of press? man-to-man (maybe trap at halfcourt)

Do they deny the ball to the inbounder? no (plays center field)

How good is middle coverage? good (Gasol very mobile)

## OPPONENTS INDIVIDUAL CHARACTERISTICS

#	13	Name	Marc Gasol		Pos	C	HT	2.15	WT		Year	'89	(RH/LH)
FG:		3P%:		FT%:		PtAv:		RebAv:		Offensive Rating:	E-G-A-BA-P		
Best shot and favorite move	left block, shoots over right shoulder (uses glass well)												
Defensive recommendation	stay down, likes to fake high & step in baseline.												
#	9	Name	Ricky Rubio		Pos	PG	HT	1.93	WT		Year	'90	(RH/LH)
FG:		3P%:		FT%:		PtAv:		RebAv:		Offensive Rating:	E-G-A-BA-P		
Best shot and favorite move	driving right off P+R, covers much ground <sup>W/ ball</sup>												
Defensive recommendation	play him for pass, don't over-help.												
#	10	Name	Victor Claver		Pos	F	HT	2.05	WT		Year	'88	(RH/LH)
FG:		3P%:		FT%:		PtAv:		RebAv:		Offensive Rating:	E-G-A-BA-P		
Best shot and favorite move	face-up + go from 20 ft (vs bigger PFs)												
Defensive recommendation	force him left												
#	5	Name	Rudy Fernandez		Pos	wing	HT	1.95	WT		Year	'85	(RH/LH)
FG:		3P%:		FT%:		PtAv:		RebAv:		Offensive Rating:	E-G-A-BA-P		
Best shot and favorite move	baseline drive / backdoor cut (for lob)												
Defensive recommendation	don't lose contact! (watch for lob), cut off baseline drive												
#	6	Name	Sergio Rodriguez		Pos	PG	HT	1.90	WT		Year	'86	(RH/LH)
FG:		3P%:		FT%:		PtAv:		RebAv:		Offensive Rating:	E-G-A-BA-P		
Best shot and favorite move	slithers into lane off P+R <sup>(R&amp;L)</sup> , likes runner												
Defensive recommendation	go under screens to start.												



## SCOUTING SUMMARY

Your thoughts on their offensive attack and how we should defense them:

keep bodies on everybody. They like space, freedom to create <sup>+</sup> pass

Your thoughts on their defensive attack and how we should defense them:

get ball into middle of court. They want to push baseline.   
 ↓ (bringing Gasol up)

List 5 keys that you believe are critical to our success against this opponent:

- #1. must rebound on both ends (↓ Spanish possessions)
- #2. make guards pick-up dribble sooner (stunt)
- #3. don't over-help on C Gasol + PG Rubio (they love to pass)
- #4. can't fall behind early! (1<sup>st</sup> 5 minutes!)
- #5. don't get caught on baseline offensively w/out dribble (only to score live dribble)

### OUR POSSIBLE MATCH UPS

If we were to play man-to-man, list below the way you believe we should match up with them:

Loren	Vs.	Rodriguez
Josh	Vs.	Rubio
Knez (I want Rudy!) <u>Aniza style</u>	Vs.	Fernandez
Ian	Vs.	Claver
Dean	Vs.	Gasol

What do you believe are the critical match ups and why do you feel that way?

SG must be aggressive when either Rubio/Fernandez guards him.

Also, C must make Gasol work on D early.  
 + Spanish bench is a weakness (↓ depth)